

# Environmental Assessments

High Quality Assessments  
For All Environmental Needs



Tannas Conservation Services Ltd

## BASELINE ENVIRONMENTAL ASSESSMENTS

---

**Environmental Impact Assessments:** *Soils, Land Use, Vegetation, Aquatics, Wetlands, Archaeological, Wildlife, Species at Risk, and Associated Reporting*

---

**Pre-Disturbance Assessments:** *Soils, Land Use, Vegetation, Aquatics, Wetlands, Archaeological, Wildlife, Species at Risk, and Associated Reporting*

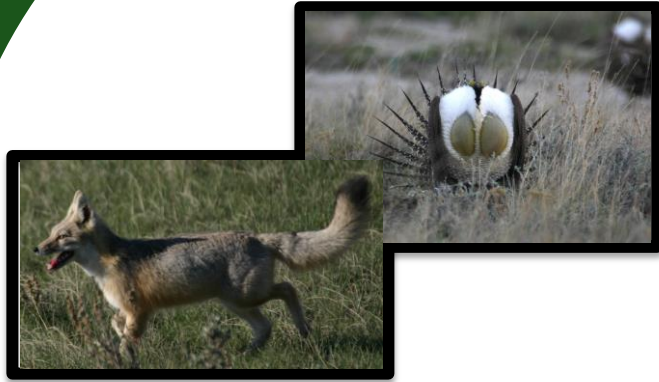
---

**Biophysical Inventories:** *Soils, Land Use, Vegetation, Aquatics, Wetlands, Archaeological, Wildlife, Species at Risk, and Comprehensive Reporting*

---

**Wetland Assessments:** *Full wetland assessments including classification, mapping, and regulatory applications*

---



## RECLAMATION ASSESSMENTS

---

**Phase 1 Assessments:** *We can provide comprehensive assessments for our urban and oil and gas clients*

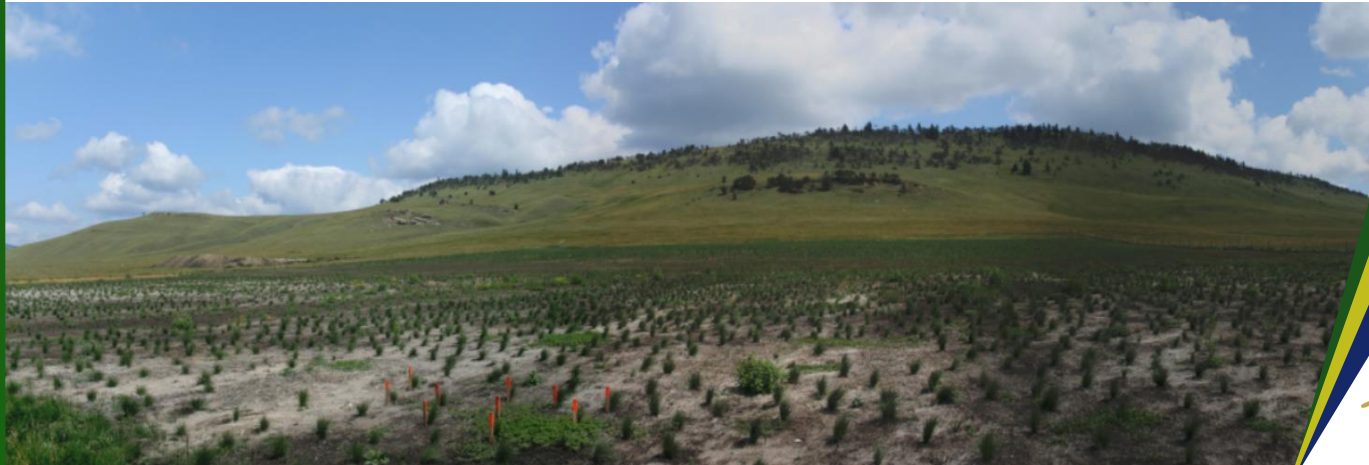
---

**Phase 2 Assessments:** *Our personnel have extensive experience working with oil and gas phase 2 assessments*

---

**Detailed Site Assessments:** *We are experienced in grassland, forested, and cultivated assessments and the accompanying applications and reporting*

---



*Our award winning professionals have experience and knowledge to navigate through the regulatory environment and ensure each project is completed in a way that meets all regulations and receives all required approvals, whether it is during the project planning phase or during site closure. Our team is made up of some of the best known vegetation specialists in Western Canada, along with experts in wildlife, reclamation, regulatory approvals, and soils. We are confident no matter the scale of the project, we can provide the appropriate team for the job.*

## Projects



### Fescue Grassland Wellsite Restoration

TCS personnel have been awarded the 2014 Emerald Award in the Small Business Category and were finalists for the 2015 ASTECH Awards with the successful restoration of fescue grasslands for the first time on a repeated basis. This restoration has occurred in over a dozen locations across Alberta, with multiple wellsites passing the detailed site assessments.

### Sitsika First Nation Bank Stabilization

TCS personnel completed all environmental assessments, submitted regulatory applications, and received approval for 3 bank stabilization projects. We contributed to enhancing habitat protection of the projects and ensuring all regulatory requirements were met and achieved. All three projects were considered 100% self compensating. We also conducted all required monitoring and reporting during construction of these projects.

## Experience

Completed dozens of field assessments for BIA's EIA's, PDA's across western Canada.

Completed Major EIA Discipline reports and contributed to the completion of EIA's with our partnering firms.

Completed over 100 wetland assessments using the 2015 Alberta Wetland Policy, and hundreds of wetlands have been assessed under previous wetland assessment guidelines.

Personnel have completed numerous Phase 1, Phase 2, and DSA assessments across Western Canada.

Completed DFO and Water Act approvals for bank stabilization projects.



## The Tannas Conservation Services Advantage

Based throughout Alberta, Tannas Conservation Services has extensive experience working across western Canada. Within the hundreds of projects we have completed we have surveyed over 2 million hectares of land in western Canada from the Arctic Ocean to the USA border. Our highly trained and experienced team integrates office and field work allowing the specialist writing the report to be the same person who has been on the ground. This ensures we provide each client with the best quality product.



Tannas Conservation Services Ltd  
[www.tannasenvironmental.com](http://www.tannasenvironmental.com)

Box 31, Cremona Alberta,  
Phone: 403 850 9052  
Email: [info@tannasenvironmental.com](mailto:info@tannasenvironmental.com)  
Cremona, Calgary, St Albert, Pincher Creek

